

# Bhagalpur College of Engineering, Bhagalpur

## Startup Cell

### Action plan regarding execution of work

The various steps in a particular startup idea from student must not be bound in time. This may create unnecessary pressure on the student. However he/she may be given freedom to do this in any timeframe within course duration.

However the mentor may weekly/biweekly/monthly review the work and communicate the progress to startup cell.

### Institute Level Evaluation Committee

The startup cell has a 10 member team which was initially formed to motivate students to think of new ideas and innovations. Since the students are now coming up with startup ideas, the team will be reorganized to serve a new purpose with the name Institute Level Evaluation Committee (ILEC).

Institute Level Evaluation Committee will evaluate an idea based on its novelty and potential to grow as a startup. It will be a 10-member committee comprising of following:

- 01 Member from each stream : 05
- 01 Member from Basic Sciences & Humanities : 02
- Coordinator, Startup : 02
- Coordinator, TEQIP-III : 01

Coordinator, Startup Cell will be the convener of the committee.

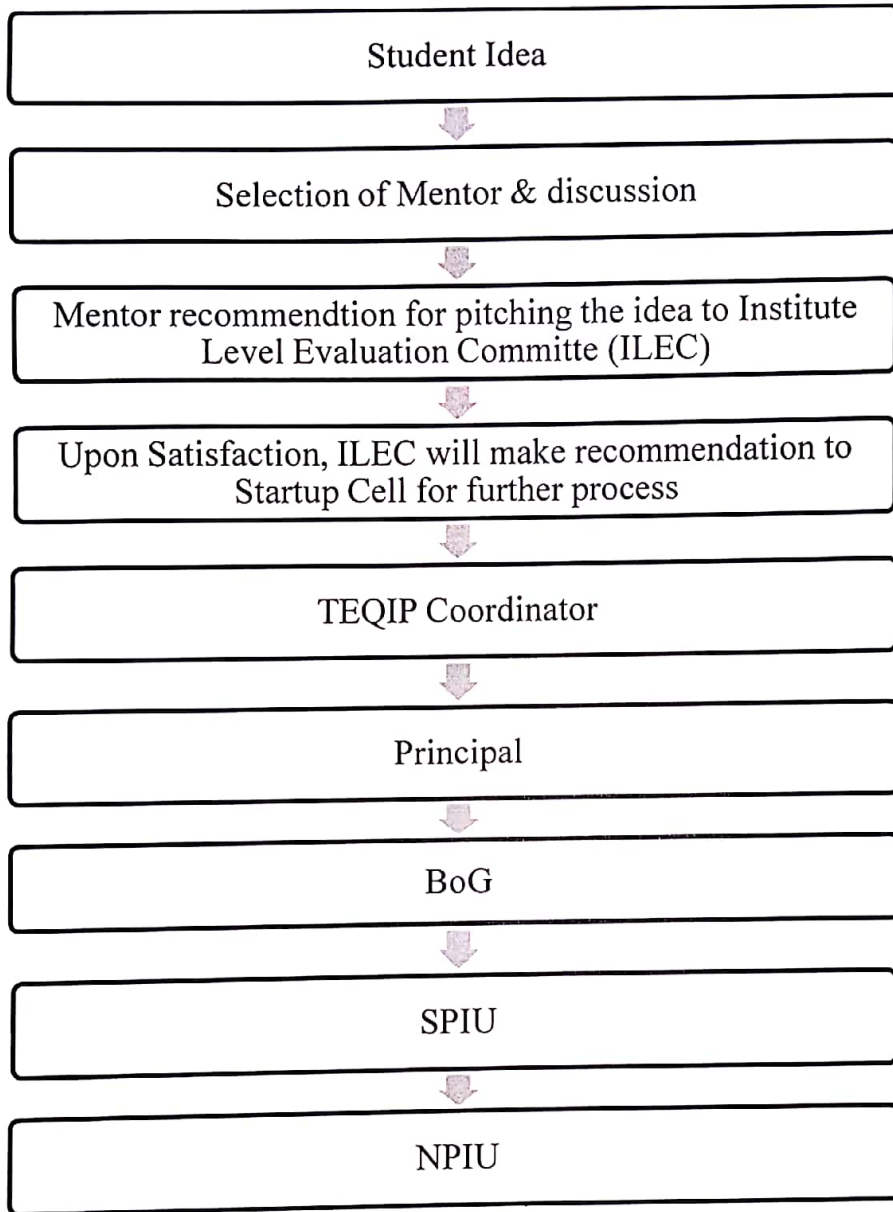
If the mentor finds the idea satisfactory then only he will recommend it to ILEC for idea pitching on request of the student. The mentor will decide some suitable dates based on availability of at least 07 out of 10 members.

Upon satisfaction, ILEC will make recommendation for the required amount of seed funding for a particular idea. **Fund will be provided stage wise depending on the requirement and progress of individual project. Flowchart for seed funding is attached below.**

If ILEC doesn't find an idea novel or its potential to grow as a startup or both, critical comments should be provided for the same. This will help the student to refine and improvise the idea.

*Abhishek*  
*16/03/2020*  
*(Coordinator,*  
*Startup Cell)*

### Flowchart for Seed Funding



*Abhishek*  
*16/03/2020*  
*(Coordinator, Startup Cell)*